



MONTHLY MEMBERSHIP PROGRESS REPORT

District 322C3

Results as of: 05/31/2019

GMT: SWADESH RANJAN SAHA

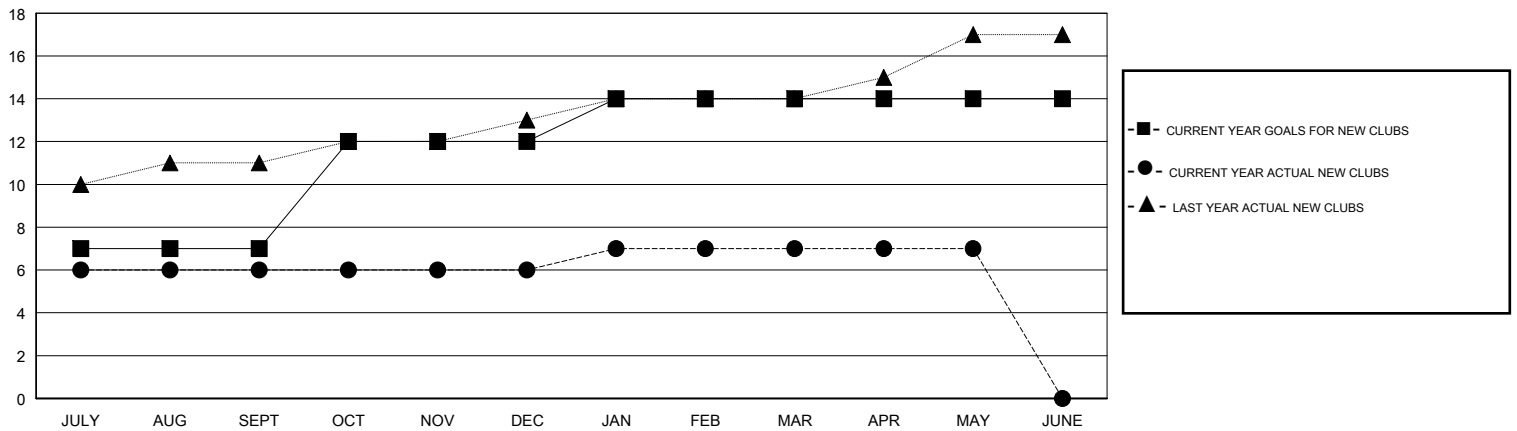
LOCATION INDIA

GMT CA

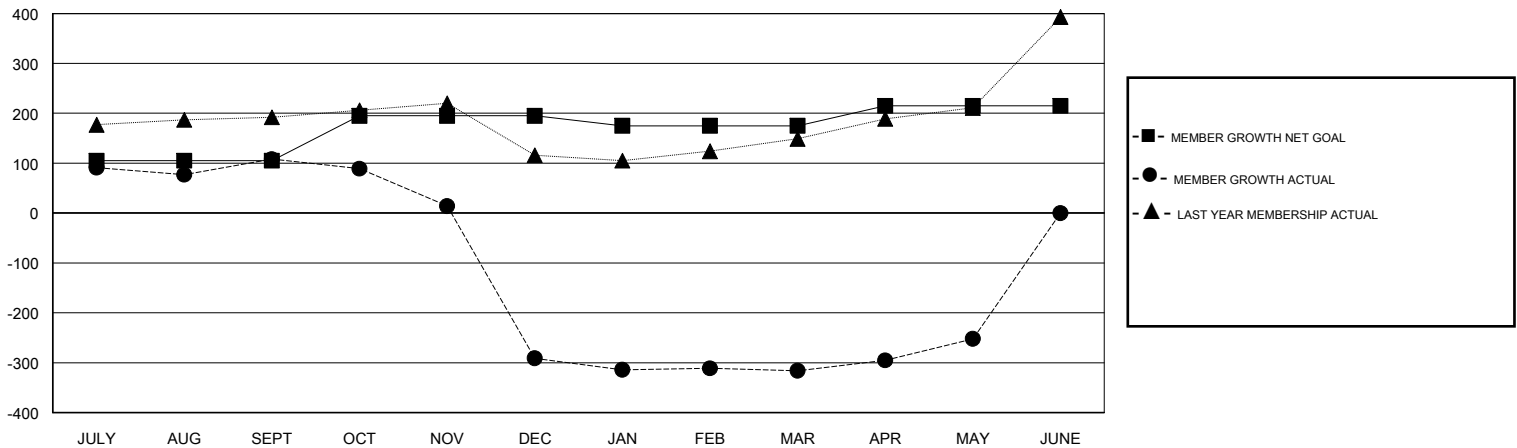
Clubs			
RESULTS FOR 2018-2019			
QUARTER	NEW CLUB GOAL	NEW CLUBS	DROPPED CLUBS
JULY/AUG/SEPT	7	6	2
OCT/NOV/DEC	5	0	9
JAN/FEB/MAR	2	1	1
APR/MAY/JUNE	0	0	0

Members			
RESULTS FOR 2018-2019			
QUARTER	MEMBER GROWTH NET GOAL	MEMBER GROWTH ACTUAL	DROPPED MEMBERS ACTUAL (including transfers)
JULY/AUG/SEPT	105	250	132
OCT/NOV/DEC	90	70	467
JAN/FEB/MAR	-20	88	93
APR/MAY/JUNE	40	97	31

GOALS AND ACTUAL NEW CLUBS CUMULATIVE



GOALS AND ACTUAL MEMBERS CUMULATIVE



DROPPED CLUBS: 12	58 CLUBS OF 115 ADDED 1 OR MORE NEW MEMBERS	<u>GENDER DISTRIBUTION</u> MALE 2,713 (74.61%) FEMALE 923 (25.39%) Women Percentage Fiscal Year Goal: 26%
<u>DROPPED MEMBERS</u> DECEASED 14 CLUB CANCELLED 289 OTHER 420 TOTAL 723	CLICK HERE FOR CUMULATIVE MEMBERSHIP DATA	TOTAL FAMILY UNIT MEMBERS 2,337 FAMILY MEMBERS PAYING HALF DUES 1,446